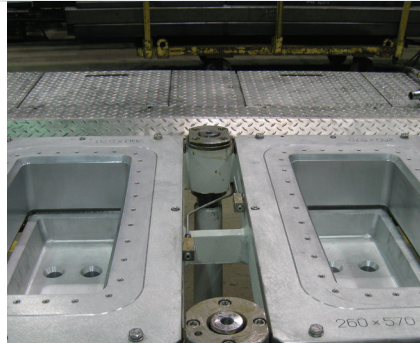
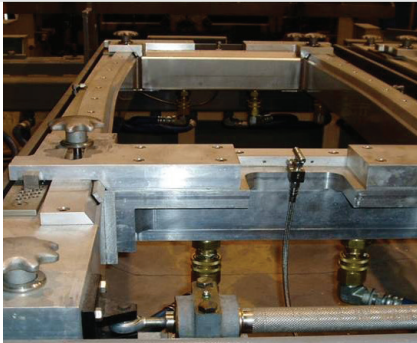


Casting Table and Moulds

— Technology with ultra-fast mould change capability and optimised, tailor-made design.



BENEFITS

- Ultra-fast change of mould size
- Optimal precision in the positioning of moulds and bottom blocks
- Repeatability of the casting configuration
- Self-alignment during assembly
- Optimised availability of casting pit
- Increased casting capacity
- Custom design according to existing site requirements
- No compromise on existing casting configuration

TECHNICAL FEATURES

- Unitised tooling design
- Technology available for casting of sheet ingots and t-ingots
- "Hot top" or "open top" design
- Water chamber with optimal design of water jets
- Self-integrated mould lubrication system
- Mould profile calculated for optimal dimensions after casting
- Ultra-fast installation of casting table (image)

ADJUSTABLE MOULDS – ACCESSORIES

- Casting of several sizes of ingots with a single set of moulds
- Minimum investment by purchasing a single set of moulds
- No tools required for handling
- Optimum performance for each product
- RTA patented technology of adjustable moulds transferred to Dynamic Concept